

The Politics of Pensions in Ireland

Michelle Maher
Maynooth University
ISPA Research Conference
1st July 2016, Dublin

This Presentation

1. The Irish Pension System
2. Pension Policy Trajectory
3. Epistemic Community
4. Institutional Context for Pension Policy
5. Counterweight Actors?
6. Conclusion

The Irish Pension System

Public

- State Pension (Contributory)
- Means Tested State Pension (Non-Contributory)

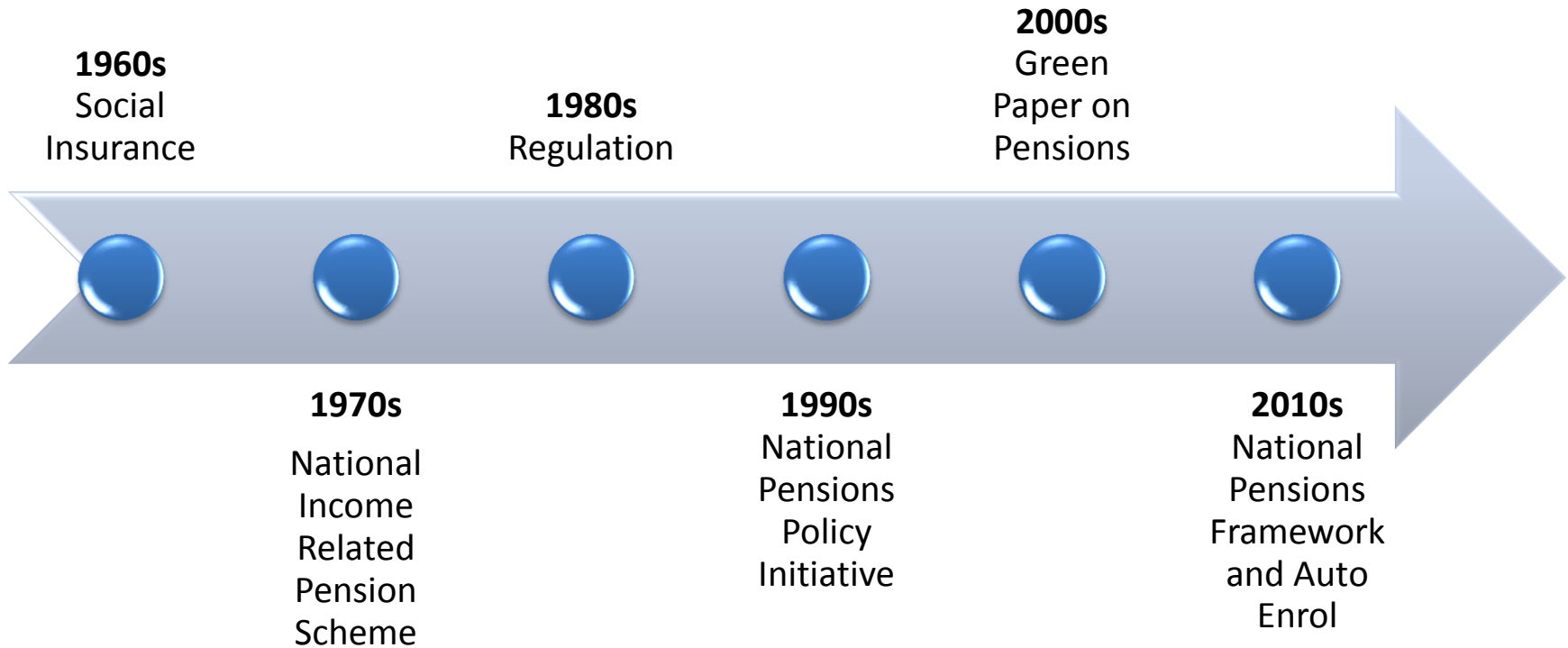
Private

- Voluntary Occupational Pensions
- Subsidised and regulated by the state

Private

- Voluntary Personal Retirement Savings Accounts
- Subsidised and regulated by the state

Reeling in the Pensions Years



Epistemic Community



Definition:

A network of professionals with recognised expertise and competence in a particular domain and an authoritative claim to policy relevant knowledge within that domain or issue area (Haas 1992:46)

The Institutional Context for Pension Policy Making

- Department of Social Protection
- Department of Finance
- Social Partnership
- Pensions Authority (Pensions Board)

Other Actors?

Social Partnership in Ireland

Date Published	Name	Period Covered
October 1987	Programme for National Recovery	1987-1990
January 1991	Programme for Economic and Social Progress	1991-1993
February 1994	Programme for Competitiveness and Work	1993-1996
January 1997	Partnership 2000	1997-2000
November 1999	Programme for Prosperity and Fairness	2000-2003
February 2003	Sustaining Progress	2003-2006
June 2006	Towards 2016	2006-2016

Programme for National Recovery

1986
NESC
Strategy
for
Develop-
ment

Jan 1987
NPB 1st
Report

1988/89
Three
NPB
Reports:

Feb 1987



Oct 1987
PNR

**June
1989**



Programme for Economic and Social Progress (PESP)



**June
1989**

**Jan 1991
PESP**



Nov 1992



**1990
Pensions
Act**

**1991
Report
Treat-
ment
H/holds
SW Code**

**Dec 1993
Final
Report
NPB**

Programme for Competitiveness and Work (PCW)



**Nov
1992**

**1994
OECD
Report**

**Expert Group
Integration Tax
and Social
Welfare
1996**

**Social Insurance
in Ireland Report
Oct
1996**



**Feb
1994
PCW**

**Dec
1994**

**1996
ESRI
Report
Coverage**



Partnership 2000 (P2000)



Dec 1994

**Feb
1997**
NPPI
Launch

**April
1997**
National
Anti-
Poverty
Strategy

**May
1998**
NPPI
Report



**Jan
1997**
P2000

**April
1997**
CORI
Pathway
to a BI

**June
1997**



**July
1999**

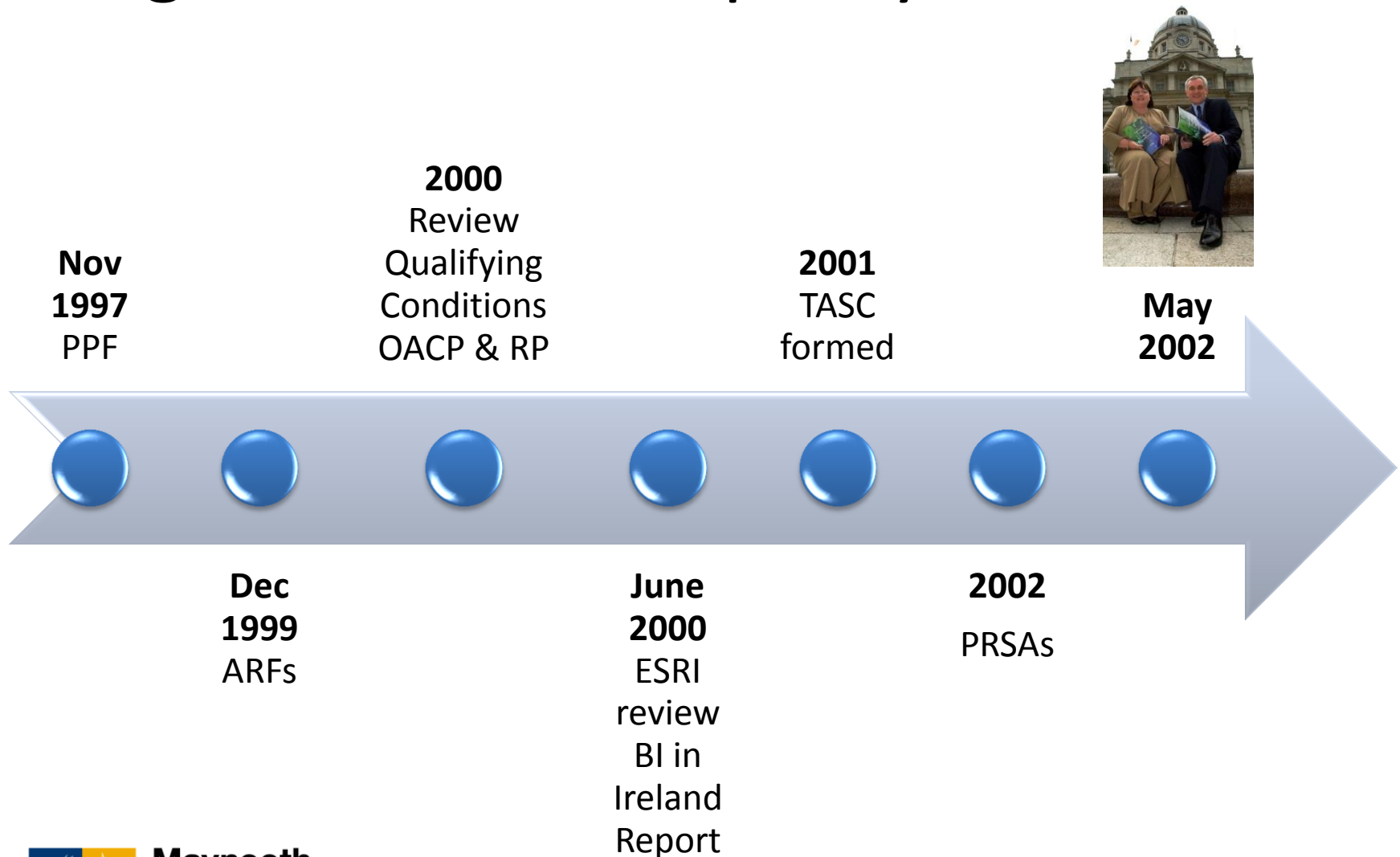
Review of
Credited
Contributions

National Pensions Policy Initiative

- “...the IAPF wrote a submission to the NPPI... myself and (*names another epistemic community member*) wrote it...That was the height of influence because if you actually look at the IAPF’s submission and you look at the NPPI output there was incredible overlap. Everything they looked for pretty much happened. That was the height of influence”

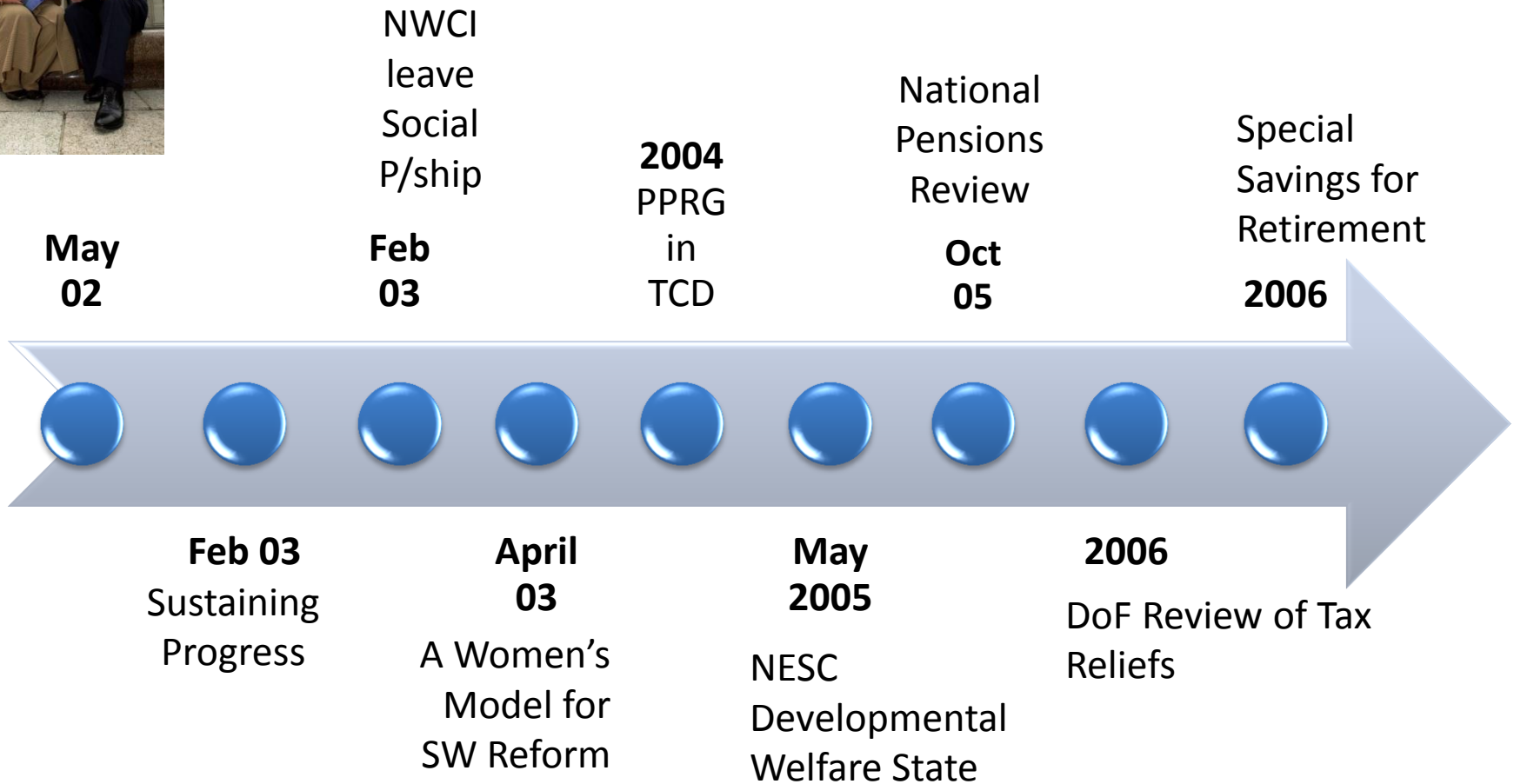
2015 Interview with senior pensions industry individual and epistemic community member for PhD research (in progress, unpublished)

Programme for Prosperity and Fairness





Sustaining Progress



Towards 2016

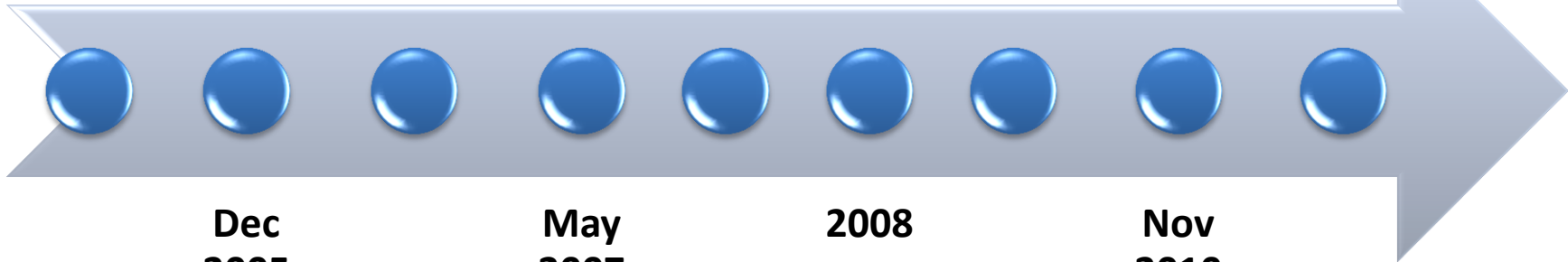
2006
NWC
rejoin
S/P

June 2006
Toward
2016

Green Paper on
Pensions
Oct 2007

National
Pensions
Framework
2010

Nov 2011



Dec 2005
NESC Strategy
2006 Report

May 2007

2008
NWC Pensions:
What Women
Want

Nov 2010
Troika



Conclusion

- Epistemic Community framework explains the trajectory of pension policy in Ireland
- Counterweight needed to place Ireland on a path of equitable sustainable adequate pension provision for future generations
- Thank You for your attention!
- michelle.maher.2010@mumail.ie